

OSM2World

Project Introduction
2nd 3D Workshop Garching

Tordanik
(Tobias Knerr)

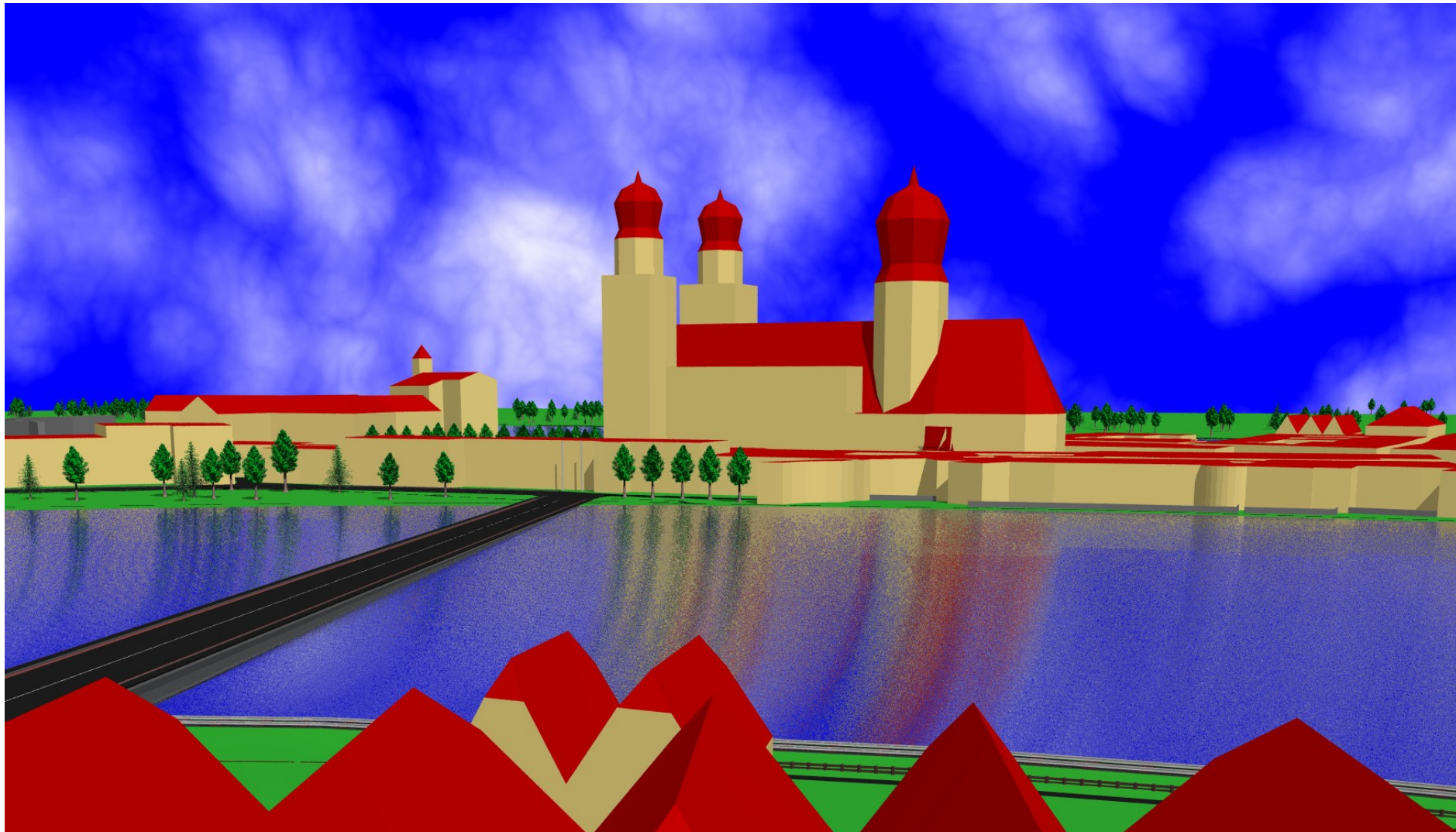
OSM2World

- OSM2World is a converter
- written in Java, Open Source
- it creates 3D models from OSM data



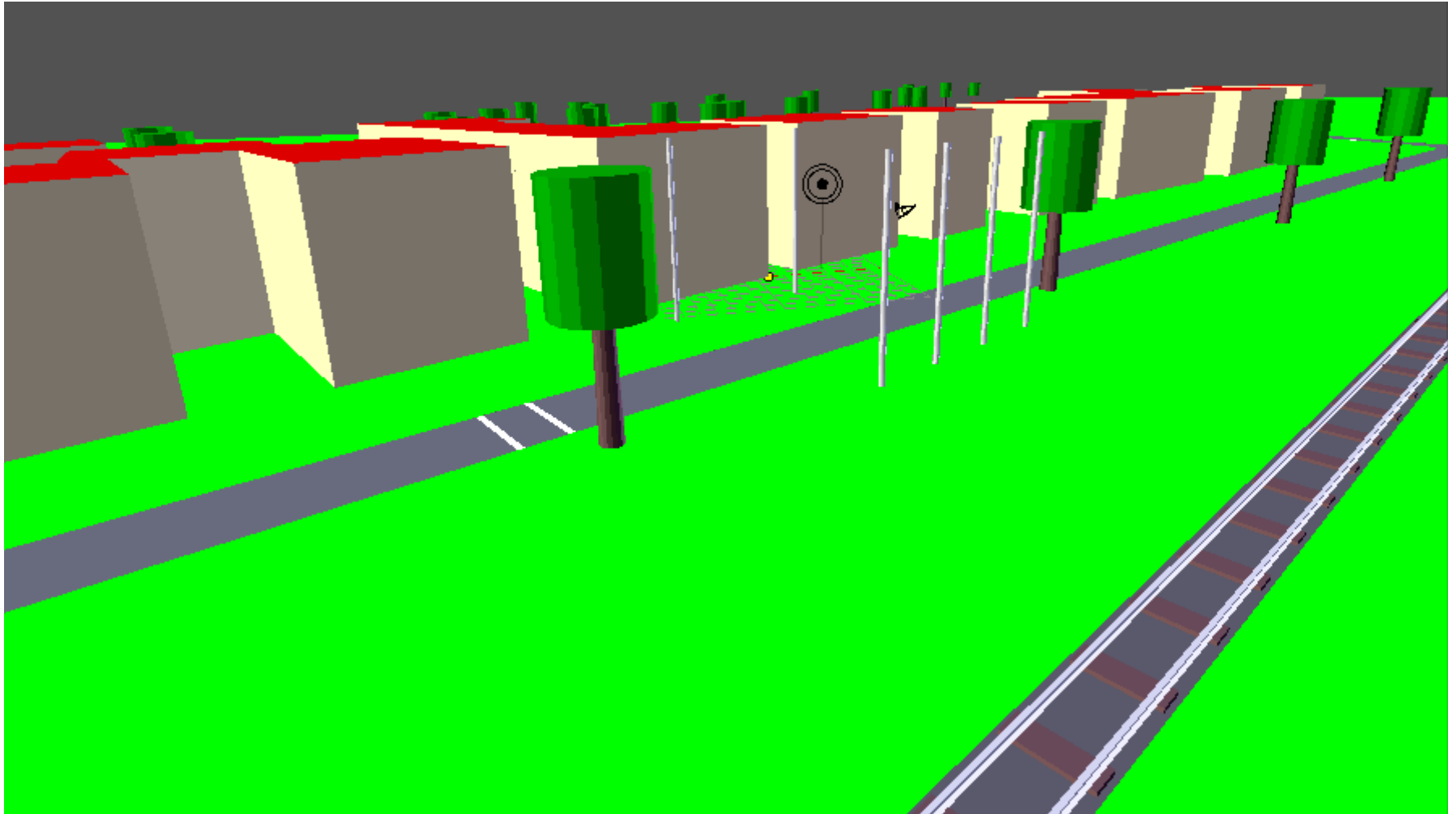
OSM2World

.pov



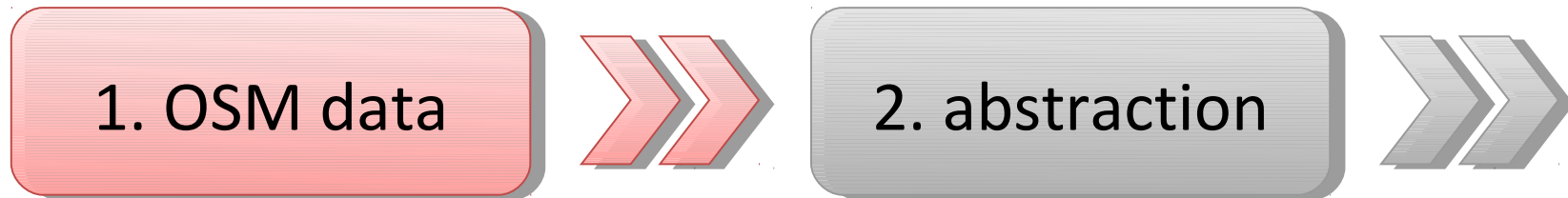
OSM2World

.obj



OSM2World – pipeline overview

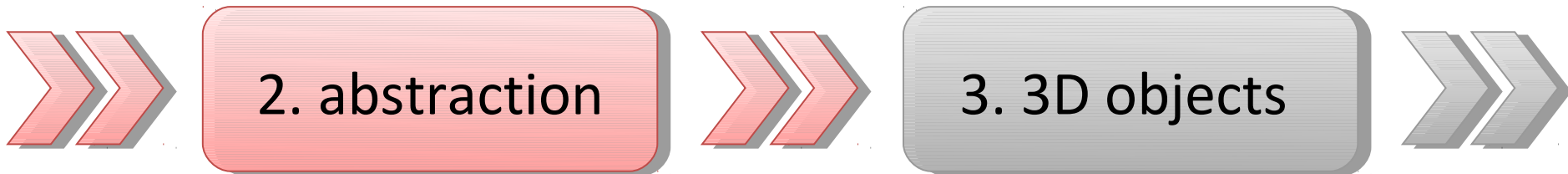
Phase 1: read OpenStreetMap data



- only existing implementation: Osmosis
- considering JOSM integration
- can be extended for additional data sources

OSM2World – pipeline overview

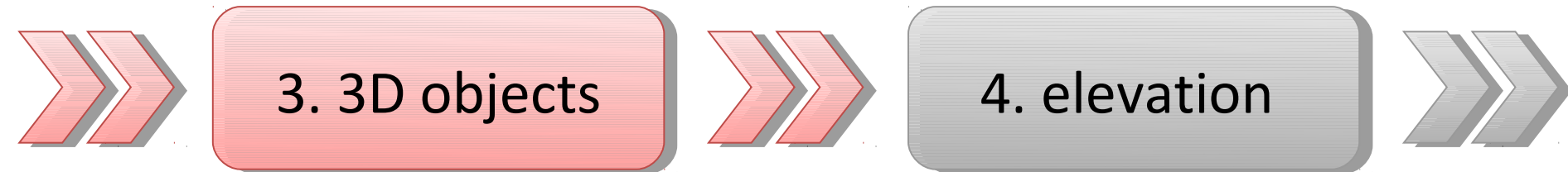
Phase 2: internal representation of OSM data



- internal representation:
 - point, way segment, area (with holes)
- no support for advanced multipolygons yet
- calculation of overlaps and intersections in 2D (regularly spaced grid for speedup)

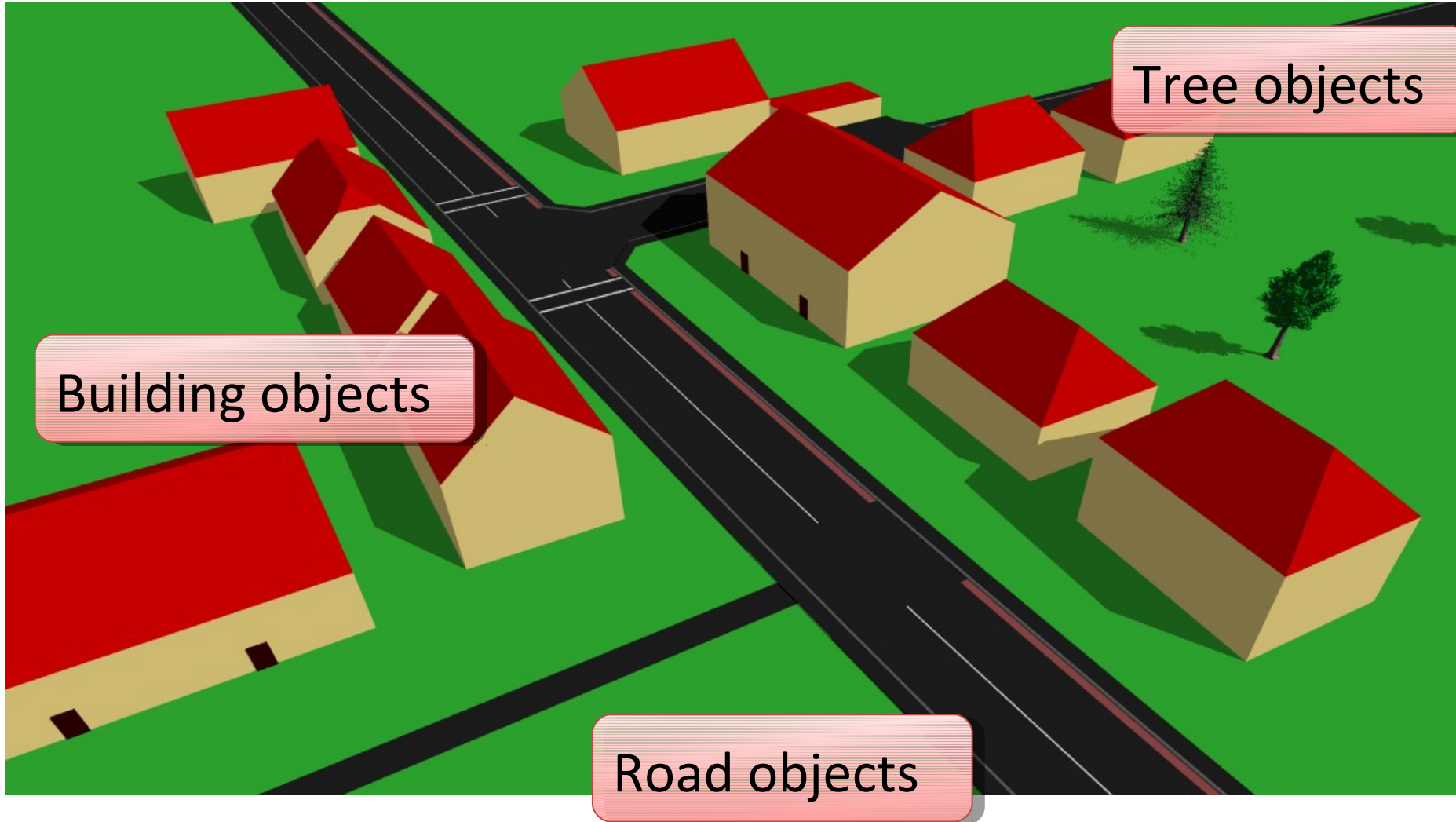
OSM2World – pipeline overview

Phase 3: creating 3D objects



- recognize object type based on tags
- separate code for handling each object type
- calculates 3D geometry

OSM2World – pipeline overview

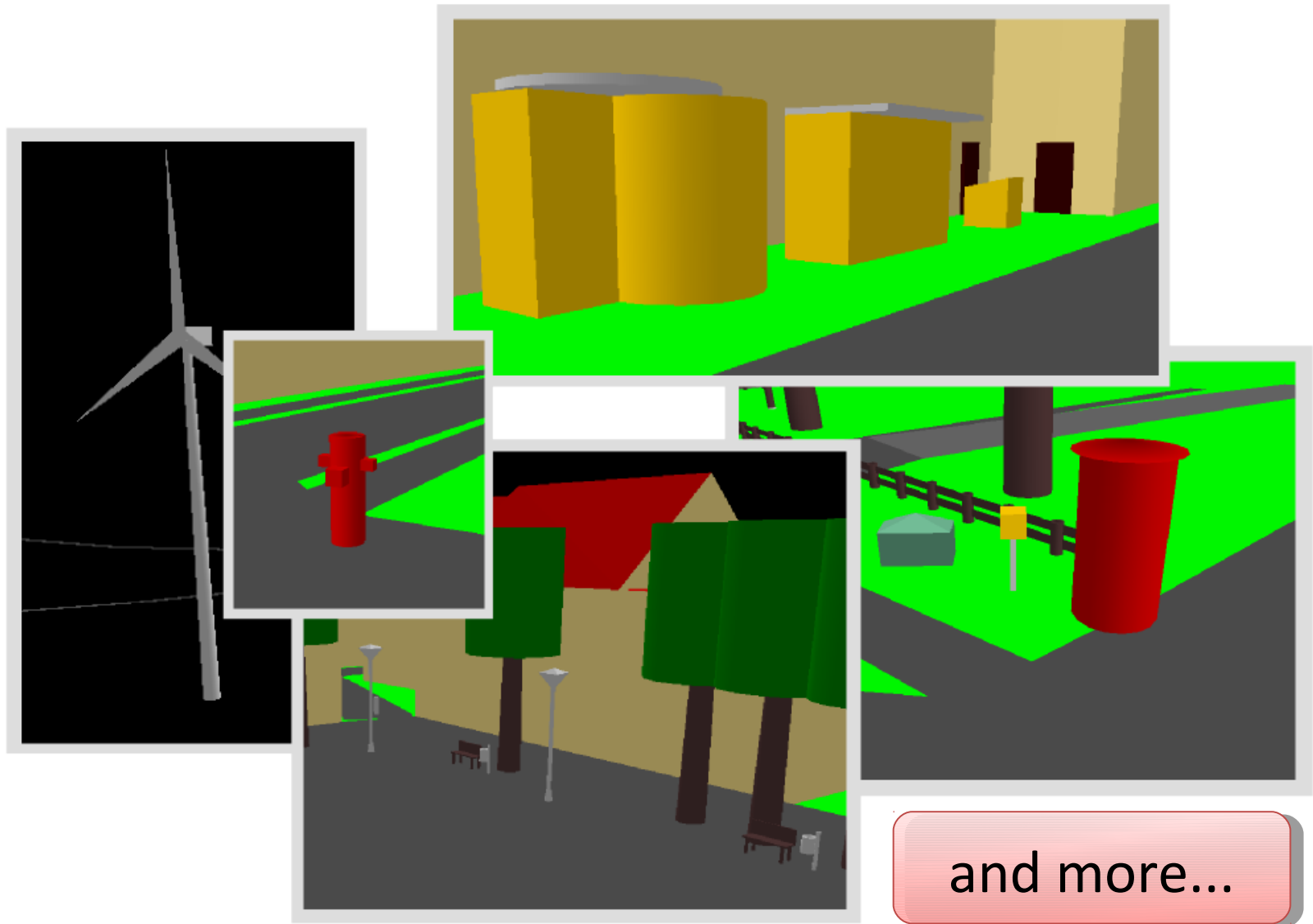


OSM2World – pipeline overview

Example: Building object type code deals with

- parsing of building-specific tags
- building parts
- outline extrusion
- building passages
- roof shape
- entrance placement

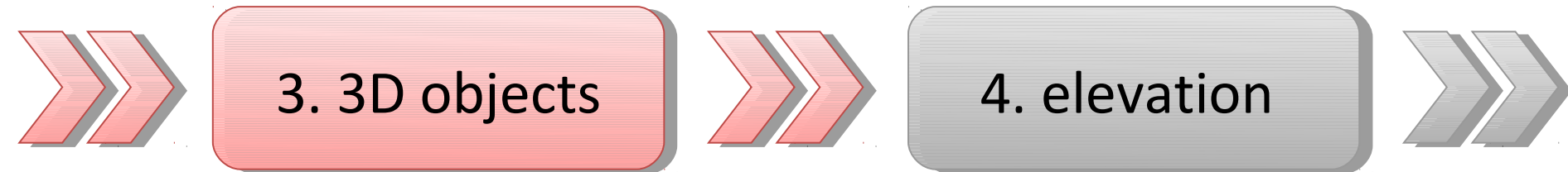
OSM2World – pipeline overview



and more...

OSM2World – pipeline overview

Phase 3: creating 3D objects



- TODO:
 - more object types, better quality
 - style files (currently: configurable colors)
 - read external model files

OSM2World – pipeline overview

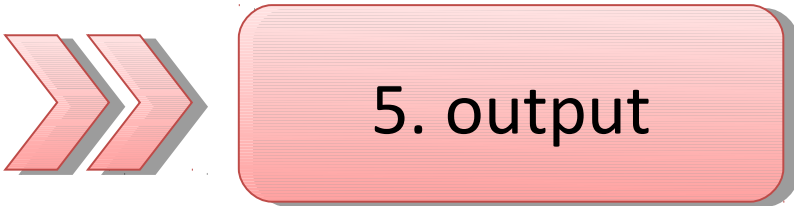
Phase 4: elevation



- evaluate elevation-related attributes:
bridge/tunnel, layer, incline, maxheight, ele, ...
- under construction, doesn't work reliably yet
- TODO: terrain elevation (e.g. SRTM)

OSM2World – pipeline overview

Phase 5: output 3D models



- write 3D models as .obj, .pov
- render models to .png using OpenGL
- TODO: textures, additional formats (Collada?)

OSM2World

- libraries used:
 - Osmosis
 - JOGL (OpenGL bindings)
 - JTS (geometry)
- frontends
 - command line
 - graphical interface with real-time navigation
(for debugging & experiments)
 - build into other Java programs

OSM2World

Project Introduction
2nd 3D Workshop Garching

Tordanik
(Tobias Knerr)

osm2world.org